

Cataraqui Source Protection Area

Cana WHPA - Locations where DNAPL threats can be significant, moderate, or low

Map 5-17



Legend

- Water Supply Well
- Cataraqui Source Protection Area
- Railway
- Freeway
- Expressway / Highway
- Collector
- Watercourses
- Waterbodies
- Wetlands

Wellhead Protection Area Vulnerability Scoring

- 2
- 4
- 6
- 8
- 10

Wellhead Protection Area

- Zone A - C, E

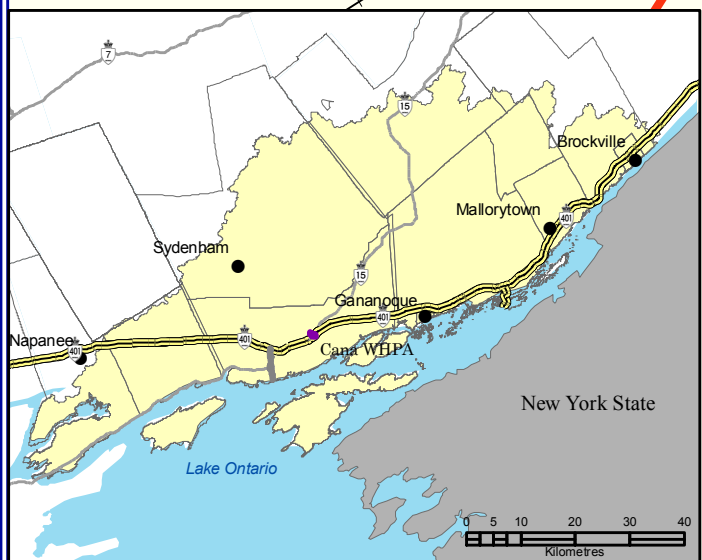
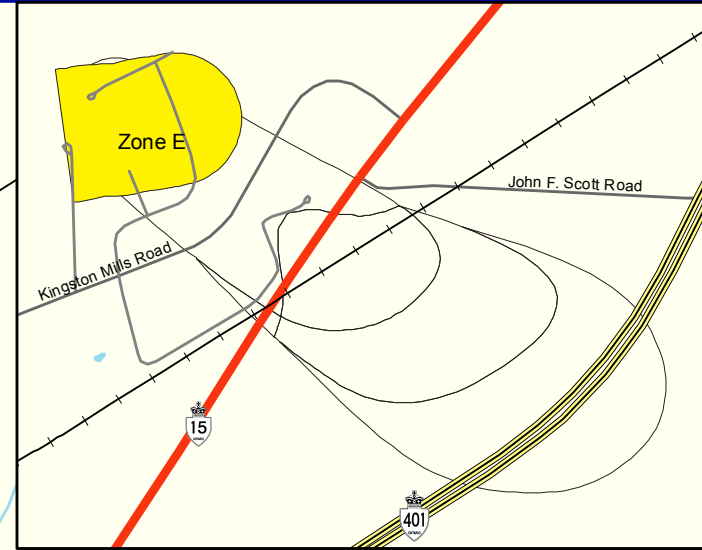
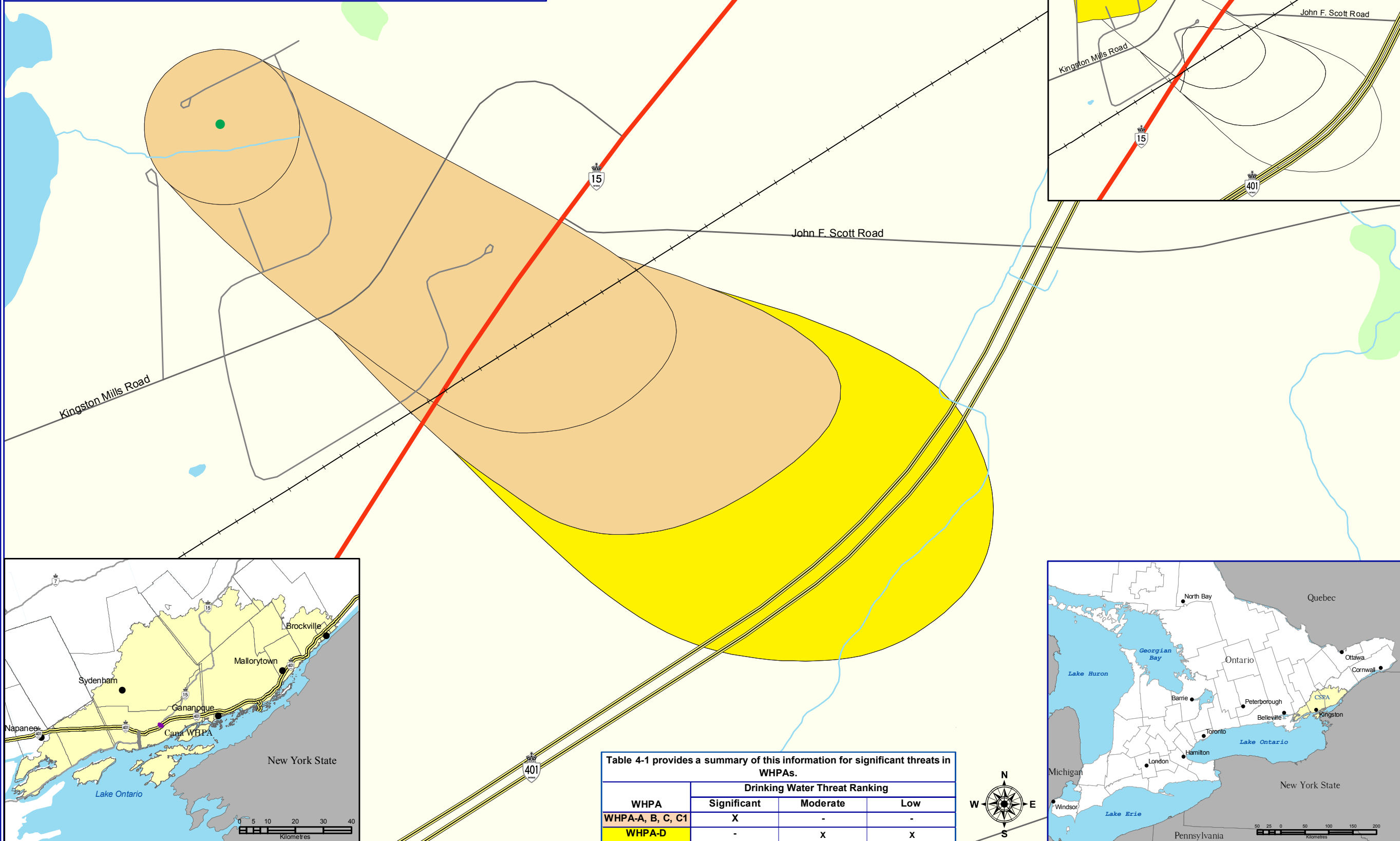
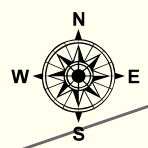


Table 4-1 provides a summary of this information for significant threats in WHPAs.

WHPA	Drinking Water Threat Ranking		
	Significant	Moderate	Low
WHPA-A, B, C, C1	X	-	-
WHPA-D	-	X	X



Created: July 20, 2009
Printed: February 23, 2011

Scale 1:5,000
0 20 40 80 120 160
Metres
Universal Transverse Mercator Projection
North American Datum 83

June 2009

This map was funded by the Ontario Government, and the Ministry of Environment. Produced by the Cataraqui Region Conservation Authority under license with the Ontario Ministry of Natural Resources © Queen's Printer for Ontario, 2005. Aerial Photography © Group Alta, 2008. The CRCA makes every effort to insure that the information presented is accurate for the intended uses of the map. There is an inherent error in all mapping products, and accuracy of the mapping cannot be guaranteed for all possible uses. All end-users must therefore determine for themselves if the information is suitable for their purposes. Y:\Base Data\Source Water\Maps\Assessment Report\Chapter 6\Map 5-17 Cana WHPA - Locations where DNAPL threats can be S.M, or L.